

5120 NESBITT RD NW, CALGARY

MAIN - 2246.45 Sq.ft. / 208.70 m²

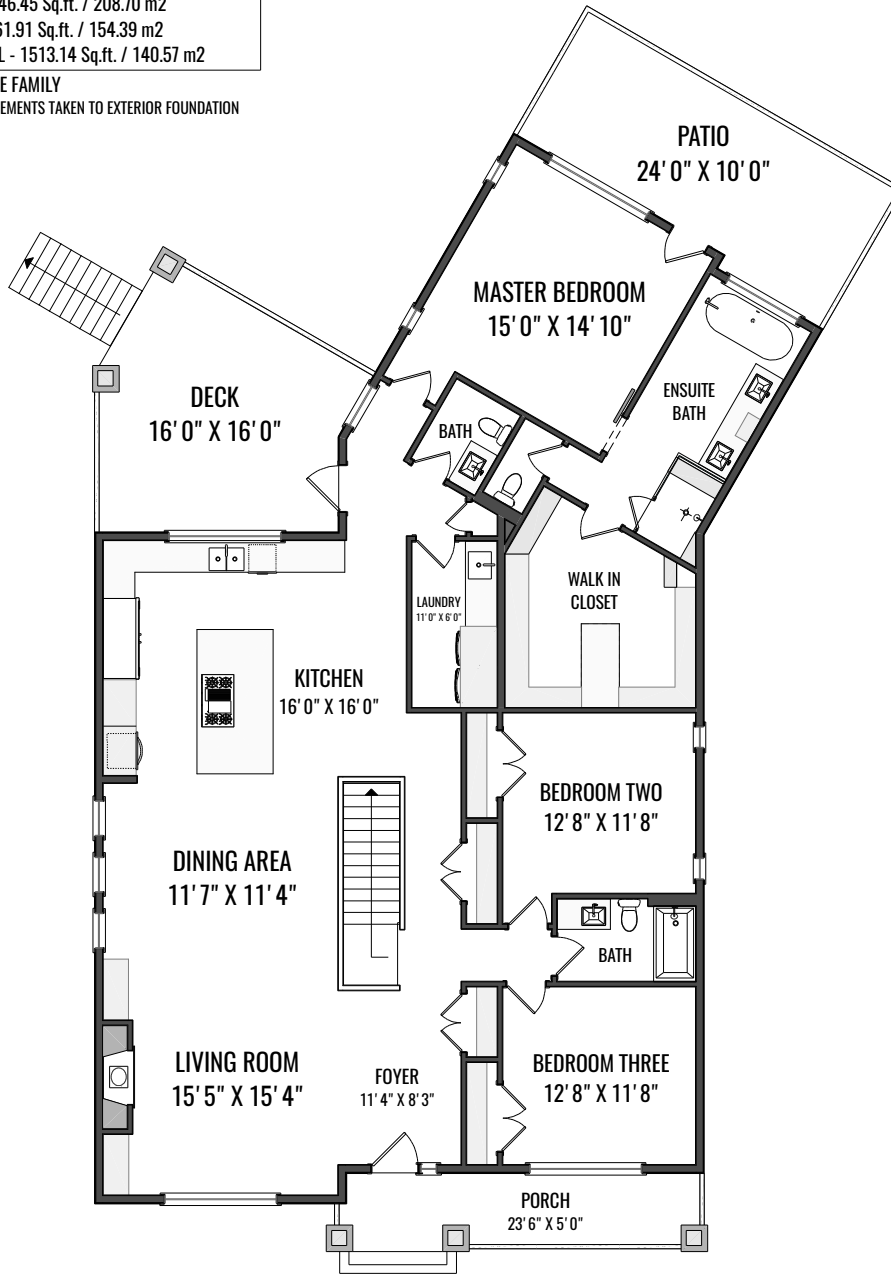
RMS TOTAL - 2246.45 Sq.ft. / 208.70 m²

BASEMENT - 1661.91 Sq.ft. / 154.39 m²

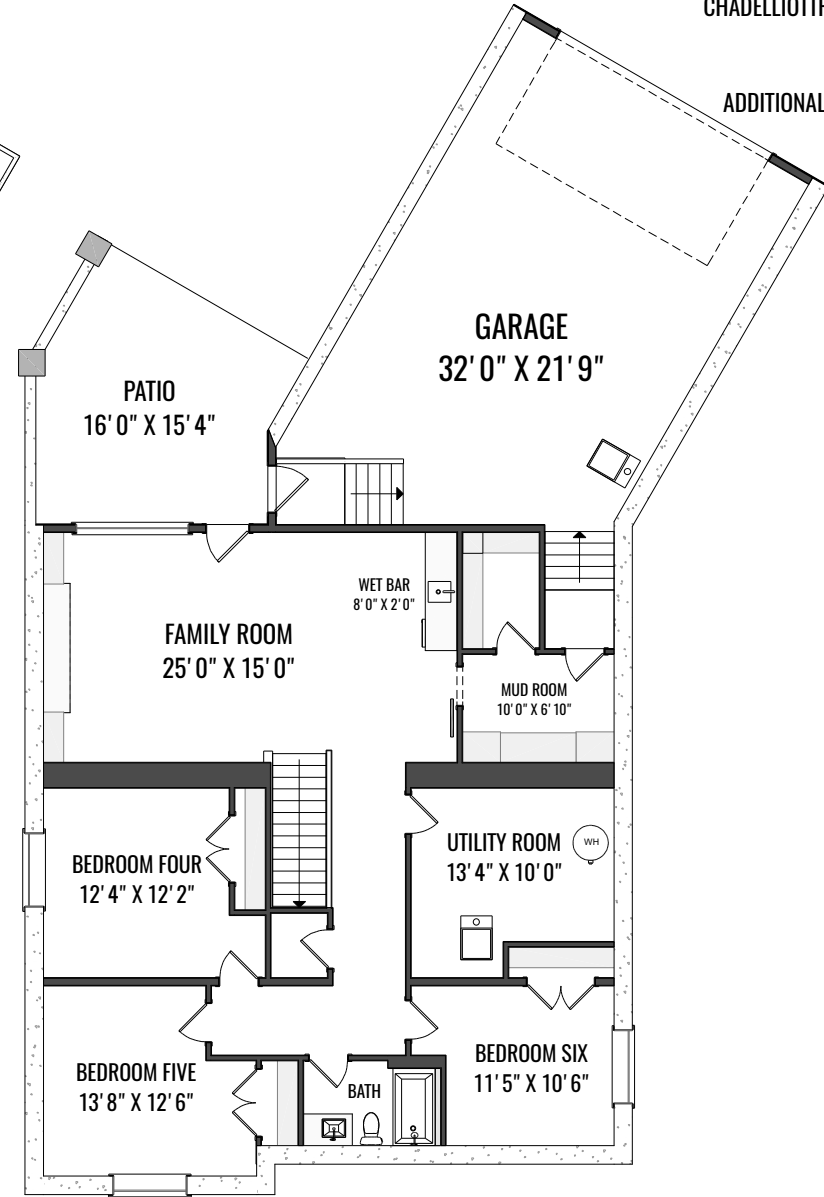
*FINISHED TOTAL - 1513.14 Sq.ft. / 140.57 m²

DETACHED SINGLE FAMILY

*RECA RMS MEASUREMENTS TAKEN TO EXTERIOR FOUNDATION



MAIN LEVEL



BASEMENT

CHAD ELLIOTT
GREATER CALGARY REAL ESTATE
403.991.9323
CHADELLIOTTREALTY@GMAIL.COM